

LONAVALA

No. of delegates: 50
2 Nights & 3Days



Overview

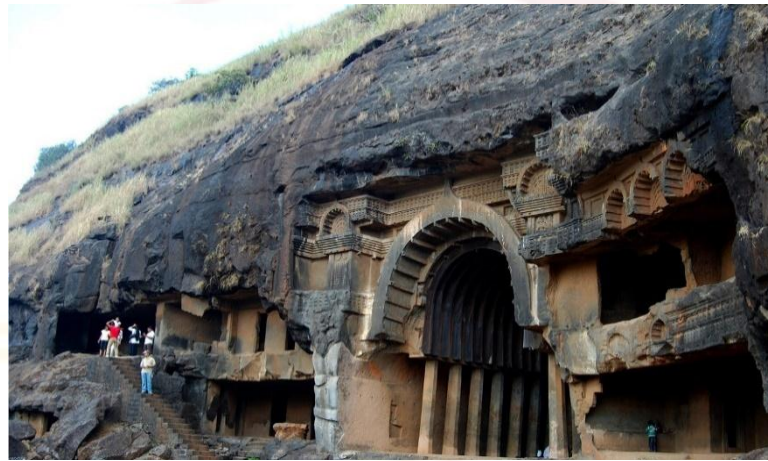
- Lonavala is one such destination which makes for a superb place to relish natural beauty.
- Salubrious climate, magnificent exquisiteness, historical forts, ancient caves and beautiful lakes make it the most sought after destination in India.
- Enveloped by Sahayadri hills, it is the perfect destination for trekking and mountaineering.
- It can be visited any time of the year.
- Monsoon is the perfect time with beautiful lakes, emerald exquisiteness and cascades.



Places To Visit



Rajmachi Point



Karla Caves



Bhushi Dam



Lohagarh Fort



Wax Museum



Pawna Lake



Connectivity

- **By road**

- Lonavala is on the Mumbai-Pune Expressway and is well-connected to several towns of Khopoli, Karjat, Talegaon and is at a distance of 1 hr 34 mins from Mumbai.

- **By train**

- Lonavala is well-connected by train. Local trains run from Pune at 2 hour intervals.
- It takes 2.5 hours by train from Mumbai and 1 to 1.5 hour from Pune.
- All trains, travelling between Mumbai and Pune halt at Lonavala.



Flights Matrix

Mumbai						
	Onward			Return		
Hubs	Airline	Stops	Time	Airline	Stops	Time
Delhi	Indigo 179	Direct	08:30-10:35	Indigo 124	Direct	14:30-17:35
Chennai	Indigo 782	Direct	08:55-10:55	Indigo 279	Direct	14:45-16:35
Bangalore	Indigo 464	Direct	09:20-11:05	Go Air 323	Direct	14:30-16:10
Hyderabad	Indigo 608	Direct	10:05-11:30	Indigo 264	Direct	15:15-16:35
Kolkata	Spicejet 488	Direct	08:00-10:55	Indigo 326	Direct	14:40-17:25

Please Note:

Average flight cost per person is INR 7,100/-

Flight rate are subject to availability and at time of Confirmation



Suggested Itinerary

Day 01:

- Arrival at Mumbai airport
- Transfers to Lonavala <02 Hours of Ride>
- Check-in at Hotel
- Lunch at Hotel
- Go for sightseeing: Visit Karla caves ,Bushi Dam and Tiger point
- Return back to the Hotel
- Dinner at the Hotel.
- Overnight stay at the Hotel.



Day 02:

- Breakfast at the hotel.
- Team building activity at the Hotel
- Lunch at the hotel.
- Visit Pawna Lake for water sports<Jet Ski, Boat Ride>
- Gala Dinner at the hotel.
- Overnight stay at the hotel.



Day 03:

- Breakfast at the hotel.
- Check-out of the Hotel
- Transfer back to the Mumbai Airport.



Della Resorts 5*

- Della Resorts is a designer resort spread over 43 acres. It houses three different properties i.e. Della Adventure Resort, Della Luxury Resort and Camp Della Resort.
- Housed within this property is Della Adventure which is India's largest extreme adventure park with over a 100 adventure activities including bungee jumping and swoop swing.
- Room Inventory: 168



Fariyas Resort Lonavala 5*

- Overlooking the beautiful Frichley Hills, Fariyas Resort in Lonavala features an outdoor water theme park.
- It enjoys proximity to the express highway, main market and several tourist attractions, including Pawna Lake, Lohagad Fort and Karla and Bhaja Caves. It is one of the best resorts in Lonavala.
- Room Inventory: 163 rooms



Meetings and Conference

Venue	Area (sqft)	Theatre	Classroom	U Shape	Double U	Cluster	Cluster (Rectangle Table)
Chambers	2700	280	150	70	110	90	100
Chamber 1	936	70	40	25	-	30	30
Chamber 2	828	60	30	25	-	25	25
Chamber 3	936	70	40	25	-	30	30
Galaxy 2	1775	150	75	45	60	50	60
Senate	1300	120	60	40	55	50	60
Monarch	116	85	50	25	40	35	40
Forum	784	50	30	25	-	25	25
Galaxy	595	40	30	20	-	-	20
Society	338	20	21	15	-	-	15
Regal	2496	200	110	55	80	80	100



Hilton Shillim - 5*

- Hilton Shillim Estate Retreat and Spa features luxurious villas.
- Located in the Sahyadri mountain range within the 320-acre Shillim Estate, Hilton Shillim Estate Retreat and Spa features luxurious villas, 4 relaxation terraces and a yoga pavilion. Its extensive spa boasts over 150 treatments while 7 food and beverage options are available.
- Room Inventory : 99



Picaddle Resort - 4*

- If you are planning a memorable vacation at a great location, then Lonavala is your destination and Picaddle by Meritas Hotels is your choice.
- Room Inventory: 163rooms
- The banqueting facility can accommodate gatherings from 15 to 700 Guests.



Rhythm Lonavala 4*

- Rhythm Lonavala is an all-suite luxury resort. The property nestles between unabashed indulgence and a sense of oneness with nature amidst the imposing Sahyadri Mountains.
- Amid lush gardens in the Western Ghats mountain range, this refined, Balinese-inspired resort is 1 km from Lonavala train station and 10 km from the ancient Buddhist shrines at Karla Cave.



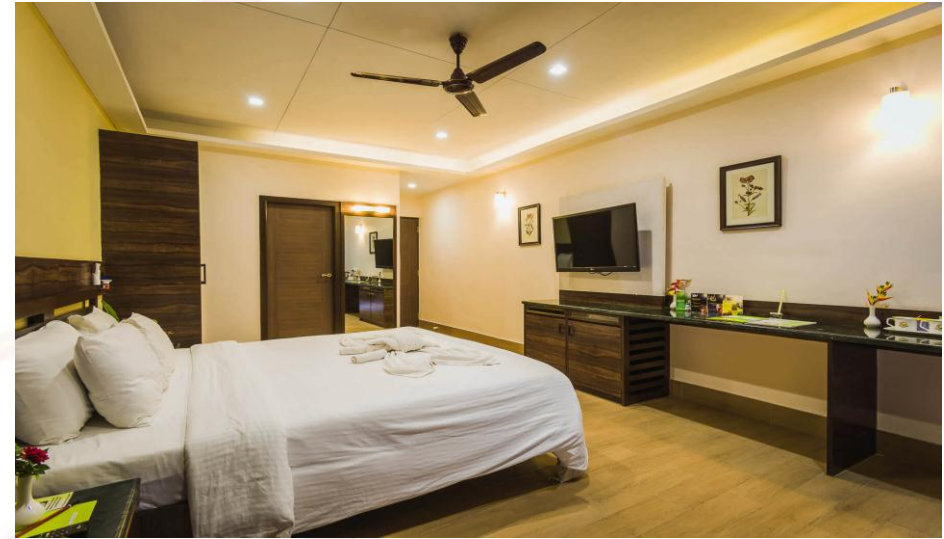
Meetings and Conference

Hotel Name	Venue	Area (sqft)	Theatre	Cluster	Banquet
Rhythm Lonavla	The Grand Oak	4200	360	170	500
	The Grand Oak 1	1400	85	60	120
	The Grand Oak 2	1400	85	60	120
	The Grand Oak 3	1400	85	60	120
	Pre Function Area	1300	-	-	-
	The Palms 1	800	65	48	75
	The Palms 2	550	36	24	50
	Board Room 1	176	-	14	-
	Board Room 1	176	-	14	-
	Cedar Lounge	2600	-	-	150
	The Treehouse Cafe	1710	-	-	80



Upper Deck Resort - 3*

- The resort offers 58 elegantly furnished rooms with scenic, breathtaking views - Valvan reservoir, Rajmachi fort.
- The well-appointed Conference halls are ideal for Conferences, Conventions, Board Meetings, and Training Programs.



Meetings and Conferences

Venue	Area (sqft)	Classroom	Theatre	U Shape	Cluster
Nelson	2106	60	150	50	80
Windmill	1767	60	150	40	70
Lighthouse	888	30	60	24	30



Dukes Retreat- 3*

- The Dukes Retreat, is one of the most exclusive resorts in Khandala, which is conveniently located on the Old Pune-Mumbai Highway.
- Nestled amidst Mother Nature, the resort offers gorgeous views of the famous cliff of the Western Ghats, with spacious and beautifully appointed rooms, contemporary meeting facilities and restaurants.
- Room Inventory: 80rooms



Meetings And Conference

- Lotus:
 - The lotus conference hall, measuring 5865 square feet, is situated on the ground level and connected to the lawns for Wedding Parties and Gala Dinners. This is an ideal venue for meetings and conventions with 400 Pax in theatre style, 150 Pax in classroom style and 170 Pax in cluster seating arrangement.
- Lotus lawn:
 - Lotus lawn, measuring 30000 square feet, is ideal for your big impressive celebration and can adequately accommodate from 1200 to 1500 persons.
- Wellington:
 - Wellington hall, measuring 741 square feet, is ideal for an open U style seating arrangement for 32 persons with a writing table..



Cost Implication

Hotels	Della Resort	Fariyas Resort	Hilton Shillim	Pidaccle Resort	Rhythm Resort	Upper Deck Resort	Dukes Retreat
Occupancy	Double	Double	Double	Double	Double	Double	Double
Ground Handling	22165	15265	26765	15265	19635	15265	16415
Flights	7100	7100	7100	7100	7100	7100	7100
Grand Total	29265	22365	33865	22365	26735	22365	23515

Please Note:

- The Quote is Valid for 50 Delegates Travelling together, any change in the number, will call for a Re-quote
- No Services are blocked, and same are subject to availability at the Time of Confirmation.



Inclusions

- Accommodation in well-appointed rooms for 02 Nights and 03 Days on Double Occupancy
- Meals As below:
 - Day 01: Lunch and Dinner at the Hotel
 - Day 02: Breakfast, Lunch and Gala Dinner at the Hotel
 - Day 03: Breakfast at the Hotel
- Gala Dinner Inclusions:
 - Unlimited 02Veg and 02 Non veg Starters for 120 Mins
 - Free flow of alcohol for 02 Hours(Whiskey: Blenders Pride, Vodka: Smirnoff, Rum: Old Monk, Beers and mixers)
 - DJ with Basic light and Sound
- Snack Box at the Time of Arrival<01 Sandwich, 01Tetra pack Juice, 01 Packet of chips and 01 water bottle>
- Team Building for 3 hours activity at the Hotel
- Return Airport Transfers and Sightseeing as per the Itinerary in an AC coach on shared basis(Entry fees at the Wax Museum)

Exclusions

- Anything which is not included in the above inclusions.
- Any expenditure which is personal in nature(room service, mini bar, etc.)
- Any kind of event set-up
- GST as Applicable
- Licenses on actuals
- Early Check-in and Late Check-out
- Any kind Of VIP/Personal Trans



Thank you

